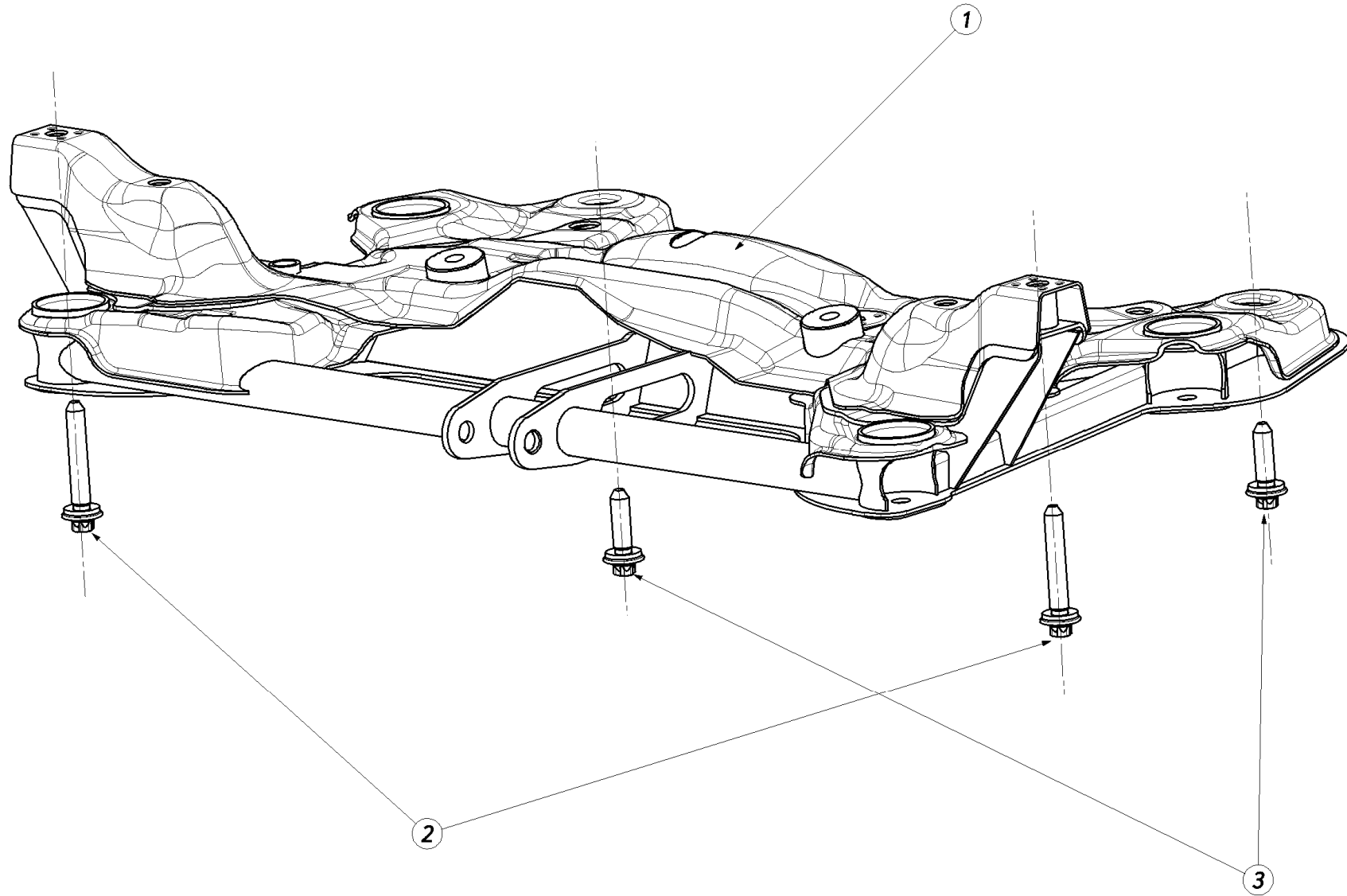


CITROËN
RACING

DS3 **R3**

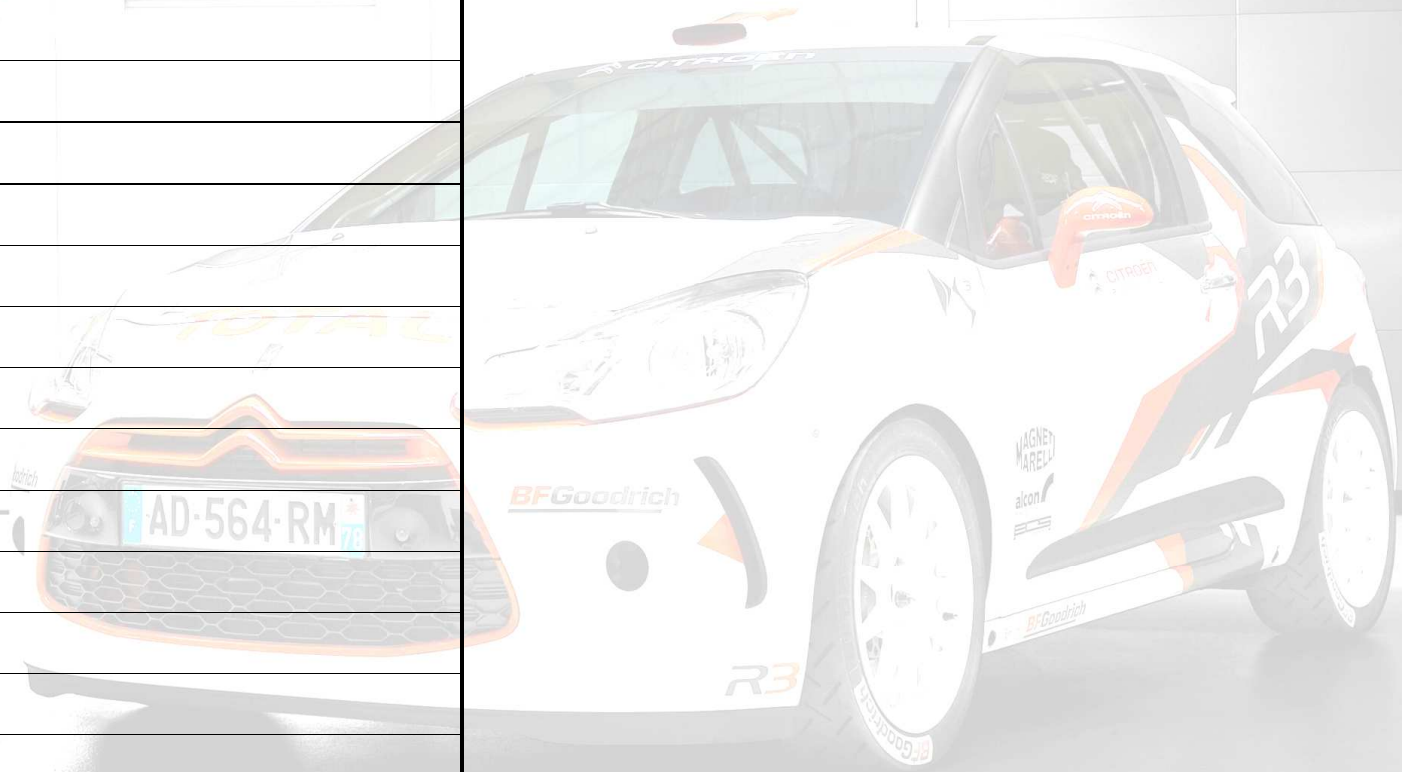
E11

BERCEAU AVANT
FRONT SUBFRAME





REP	REFERENCE	QTE	DESIGNATION
1	1E1163406H	1	Berceau AV <i>Front Subframe</i>
2	1E1164089A	2	Vis fix AV berceau L75 <i>Subframe Front Mounting Screw L75</i>
3	1E1164090A	2	Vis fix AR berceau L45 <i>Subframe Rear Mounting Screw L45</i>
4			
5			
6			
7			
8			
9			
10			
11			
12			
13			
14			
15			
16			
17			





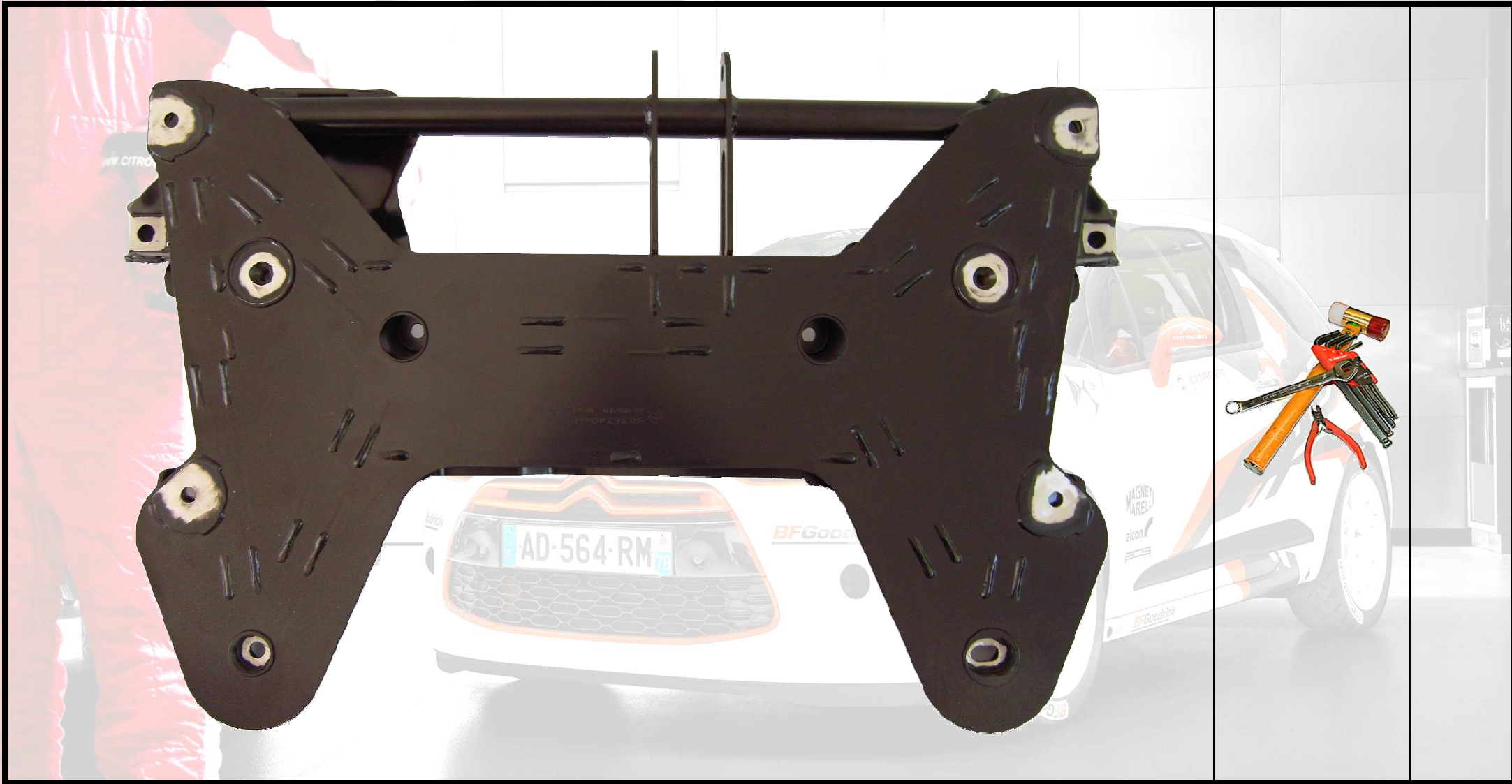
Dépolir les zones de contacts avec la caisse, direction, vis, etc., comme indiqué sur les photos ci-dessous

Etch the areas in contact with the bodyshell, steering rack, screws, etc., as indicated on the pictures below



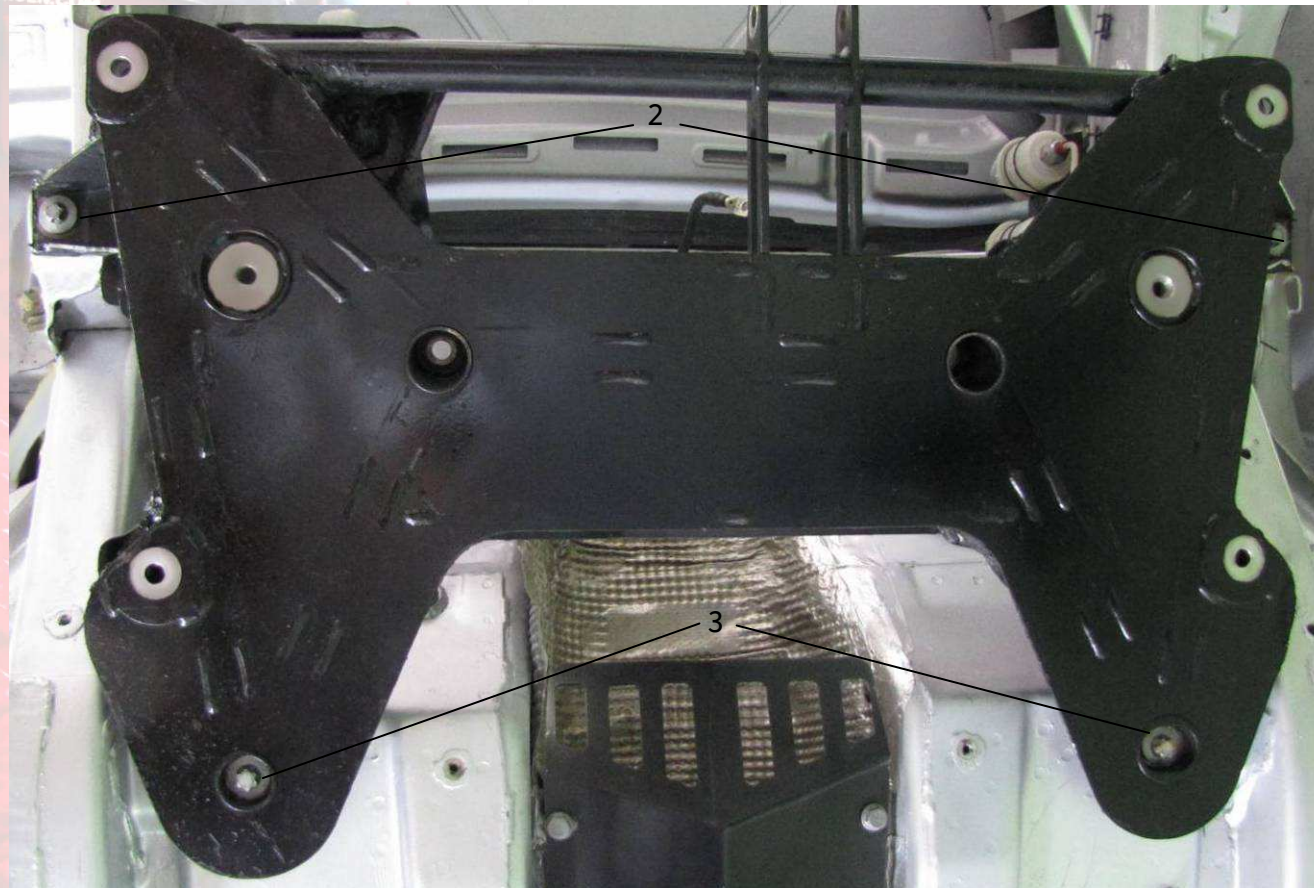


CITROËN
RACING



Contrôler les taraudages (M12x175) afin de garantir l'absence de peinture, puis assembler le berceau sur la caisse à l'aide des vis fournies (rep. 2 & 3) exclusivement.

Check the threads (M12x175) to guarantee the lack of paint, then fit the sub frame on the bodyshell, using only the supplied screws (rep. 2 & 3).



242



100
N.m